

TECHNICAL ASPECTS

Sr. No.	PROPERTY	International Std. ISO 13006/EN 176 Group Bla	ALLIANCE VITRIFIED Value	Method of Testing
1.	Deviation in Length	±0.6%	±0.1%	EN 98
2.	Deviation in Thickness	±0.5%	±0.1%	EN 98
3.	Straightness of Sides	±0.5%	±0.1%	EN 98
4.	Rectangularity	±0.6%	±0.2%	EN 98
5.	Surface Flatness	±0.5%	±0.2%	EN 98
6.	Water absorption *	<0.5%	<0.05%	EN 99
7.	Mohs hardness *	> 6	> 8	EN 101
8.	Flexural Straightness *	> 27 N/mm ²	> 47 N/mm ²	EN 100
9.	Abrasion resistance	< 204 mm ³	< 144 mm ³	EN 102
10.	Skid Resistance (Friction Coefficient)	> 0.4	> 0.6	ASTM C-1028
11.	Breaking Strength *	1113 N	2830 N	ASTM C-648
12.	Density (g/cc)	> 2	2.4	DIN 51082
13.	Frost resistance	Frost proof	Frost proof	EN 202
14.	Chemical Resistance	No damage	No damage	EN 106
15.	Thermal Shock Resistance	No damage	No damage	EN 104
16.	Colour Resistance	No damage	No damage	DIN 51094
17.	Thermal Expansion	< 9 x 10 ⁻⁶	< 6 x 10 ⁻⁶	EN 103
18.	Stain Resistance	Resistant	Resistant	ISO 10545-14
19.	Moisture Expansion	Nil	Nil	ISO 10545-10
20.	Glossiness	—	Min. 65% - 70% reflection	Glossmeter

PACKING DETAILS

Size	No. of Tiles/Box	Coverage Area
605x605mm	4 pcs.	1.46 sq. mt.

APPLICATIONS



Colours shown are as accurate as the limitations of the printing process will allow. Prospective customers are advised to inspect a sample of the tile before ordering. Every effort has been made to ensure the accuracy of the information given. However, this company reserves the right to change the specifications without prior notice. Sometimes variations in shade or size being inherent to ceramic industry may occur. Before fixing, we advise you to follow the fixing instructions on the cartons of the tiles as no responsibility can be accepted by the company once the tiles have been fixed.

Vitrified Tiles
605 x 605 mm



ALLIANCE VITRIFIED PVT. LTD.

8-A, National Highway, Opp. G.E.B. Feeder,
B/h. Airson Ceramic Ind. Near Railway Track,
Lalper, MORBI-363 642. (Gujarat-India)
Fax : 09019175600.
Mobile : +91 98798 06713
E-mail : info@alliancevitrified.com

www.alliancevitrified.com

Export Country



ARRANGE
Mo. : 97241 73320

Allied with your
Dream Home...

COMPANY INTRODUCTION

Alliance Group consist of ceramic tiles manufacturers, industrial ceramics manufacturers, importers, exporters and ceramic techno crafts. So it has set goal for its products as per future demand and requirement of its clientele. It has erected and installed machineries and technologies for future value - added products. These value - added products will bring quality, Design and innovation as per international standards and trends, So you can find all the products from ALLIANCE better than before at every stage and every time.



USW CERTIFICATIONS PVT. LTD.

Certificate of Registration



QUALITY MANAGEMENT SYSTEM

This is to certify that :

ALLIANCE VITRIFIED PVT. LTD.

**8-A, NATIONAL HIGHWAY, OPP. G.E.B. FEEDER,
B/H. AIRSON CERAMIC IND., NEAR RAILWAY TRACK LALPAR,
MORBI-363642, GUJARAT (INDIA).**

Hereby granted the Certificate Number : US058:1013

*Subsequent to the assessment conducted on 25 September 2013 and the organization found operating a Quality Management System which complies with the requirements of **ISO 9001:2008** for the following Scope.*

**MANUFACTURE AND SUPPLY OF VITRIFIED
TILES AND P.G.V.T. TILES.**

Originally registered : 08 Oct 2013

Latest Issue : 08 Oct 2013

Expiry Date : 07 Oct 2016


Managing Director

This Certificate of Registration is granted subject to relevant provisions of the **USW CERTIFICATIONS PVT. LTD.**
Contract Terms & Scheme for Registration From Self Certifications at our website www.uswc.co.in

The Certificate of Registration remains the property of **USW CERTIFICATIONS PVT. LTD.** and shall returned immediately upon request.
USWC Corporate Office : 2213, Opp-ISRO, 80 Feet Road, Indiranagar, HAL 3rd Stage, Bangalore - Karnataka India 560008
E-mail : info@uswc.co.in



VITRIFIED TILES
605 x 605 mm

Allied With Your Dream Home...



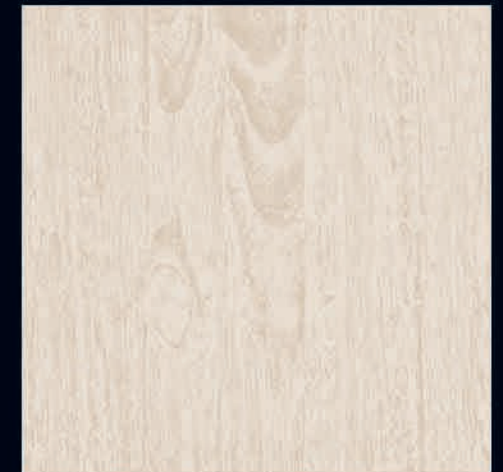
1001



1006



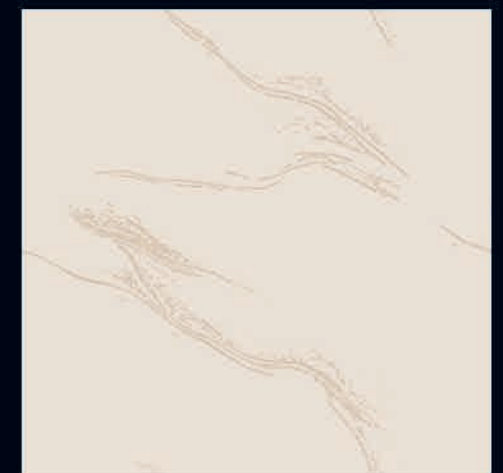
1007



1009



1011



1017



VITRIFIED TILES



VITRIFIED TILES
605 x 605 mm

Allied With Your Dream Home...



1021



1045



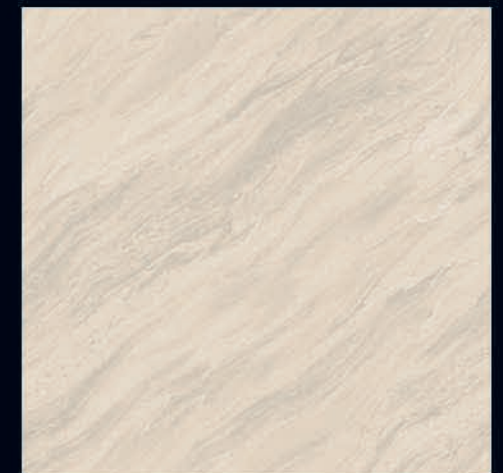
1024



1026



1027



1033



VITRIFIED TILES



VITRIFIED TILES
605 x 605 mm

Allied With Your Dream Home...



1035



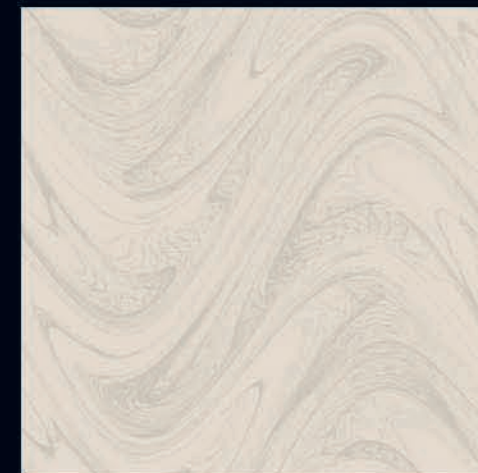
1037



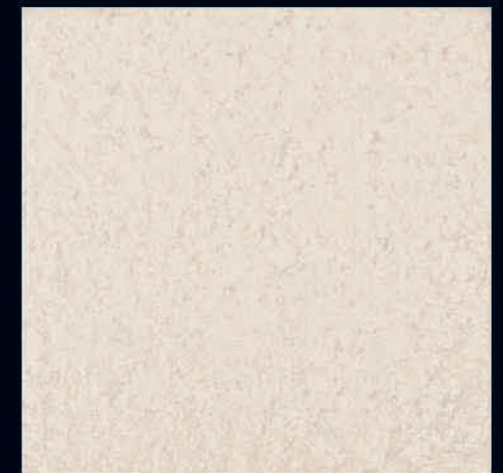
1038



1039



1040



1042



VITRIFIED TILES



ice storm series

VITRIFIED TILES
605 x 605 mm



VITRIFIED TILES
605 x 605 mm

Allied With Your Dream Home...



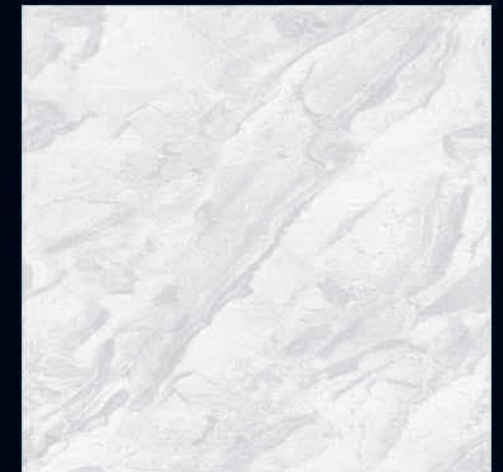
White Crystal



Glacier



Ice Storm



Miracle



VITRIFIED TILES



ANTI FREEZE



DEEP ABRASION RESISTANCE



CHEMICAL RESISTANCE



BREAKING STRENGTH



ANTI SKID



VITRIFIED TILES

605 x 605 mm

Allied With Your Dream Home...

Laying instruction

Plaster the surface of the floor to be laid with smooth finish and complete the plastering and curing at least two weeks prior to installation. Kindly look for the arrow on the back of the tile and follow the laying pattern as shown in the visual. (A) or visual (B).



Before fixing ALLIANCE tiles lay them out in the desired pattern and make sure that they give an acceptable blend of colour. Please note that certain amount of shade variation is inherent in the manufacturing of a fully vitrified products. **THE COMPANY WILL BEAR NO LIABILITY AFTER THE TILES ARE FIXED.**

For fixing ALLIANCE tiles, we recommend the use of good quality chemical fixing adhesives available in the market with proper troweling method for 100% coverage behind the tile and for peerless bonding. Please follow the fixing instructions provided along with the adhesive. For fixing ALLIANCE tiles on the floor using sand and cement, follow instructions given below:

- 1) Use cement and sand mortar in the ratio of 1:4. Add some water to create a consistent paste.
- 2) Once the mixing is completed do not add any further water and use the same within one hour.
- 3) Apply a 20-30 mm layer of bedding material over an area of 1 square meter at a time on surface of the area.

Apply a fine slurry to the back of the tile. **DO NOT USE IRON HAMMER OR SOME HEAVY MATERIAL TO PRESS THE TILE.**

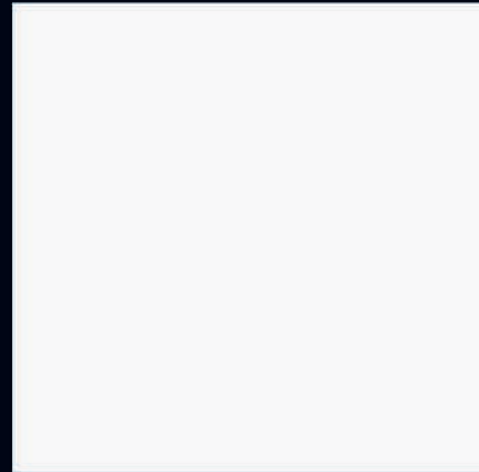
For fixing the ALLIANCE tiles on dado, Please follow the manufacturers instructions for the same. We do not recommend the use of sand and cement for fixing on dado. Mark and lay use of sand and cement of the area to be layers so the cut tiles, if any, will be on the outer edge towards the wall.

The nominal size we maintain 605mm x 605mm. The work size will be as per ISO specifications. As part of internationally accepted laying Practices, use of 2mm to 5mm spacers is recommended.

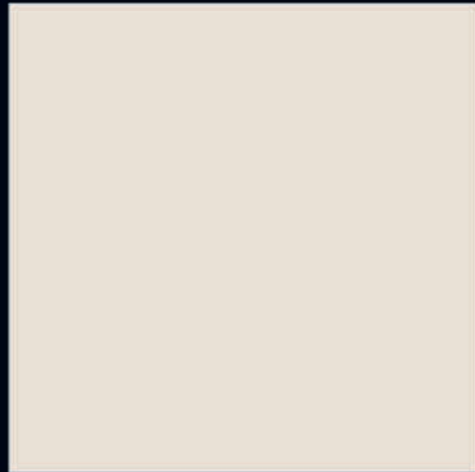
Complete the tile laying process by pressing the cut ALLIANCE tiles firmly into place along the walls/floors. Allow a minimum of 48 hours for bed curing. After this period fill the joints with recommended joints. Usage of grout sealant is recommended for keeping the grout free of dust.

15 minutes after finishing the grouting process, wipe off excess grout with a damp sponge and polish the tiles with a soft and dry cloth for a clean surface. The tiles can also be cleaned by mild acid however, hydrofluoric acid and derivatives should not be used.

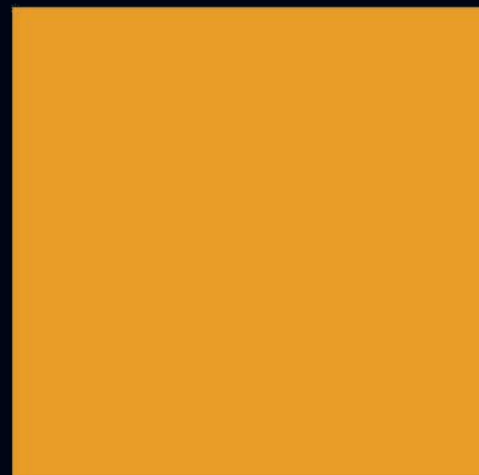
Please note that the company does not accept any liability in case problems arising out of these fixing instructions.



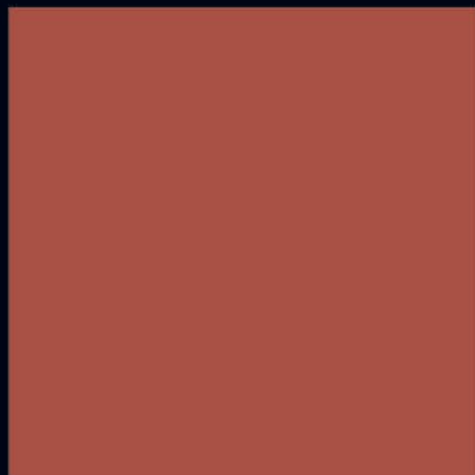
White Stone



Ivory



Jesalmer



Terra Cotta



VITRIFIED TILES